



EGP 14

EGP 20

EGP Technical data

High lift pallet truck



This specification sheet to VDI Guidelines 2198 only gives the technical figures for the standard truck.
Different tyres, other masts, additional equipment etc. could give different figures.

				STILL	STILL		
Characteristics	1.1	Manufacturer					
	1.2	Manufacturer's model designation		EGP 14	EGP 20		
	1.3	Drive: electric, diesel, petrol, LPG, mains electric		Electric	Electric		
	1.4	Steering: Tiller, pedestrian, stand-on, sit-on, automatic		Tiller	Tiller		
	1.5	Capacity/load	Q	kg	1.4	2.0	
	1.6	Load centre	c	mm	600	600	
	1.7	Load distance from centre of front axle with forks extended	x	mm	621 ¹	606 ¹	
	1.8	Wheel base	y	mm	1291	1291	
	Weights	2.1	Truck weight (without. battery)		kg	1108	1157
2.2		Axle load laden	(front/rear)	kg	897/1871	866/2586	
2.3		Axle load unladen	(front/rear)	kg	901/467	946/506	
Wheels chassis	3.1	Tyres (rubber, SE, pneu., polyurethane)		polyurethane	polyurethane		
	3.2	Tyre size, front		mm	230/120	230/120	
	3.3	Tyre size, rear		mm	85 x 90	85 x 70	
	3.5	Number of wheels front/rear (x = driven)			1 x -1/2	1 x -1/4	
	3.6	Track width, front	b ₁₀	mm	574	574	
	3.7	Track width, rear	b ₁₁	mm	980/1180/1380	980/1180/1380	
	Basic dimensions	4.2	Height, mast lowered		h ₁	mm	2377
4.3		Free lift		h ₂	mm	1810	1470
4.4		Lift height		h ₃	mm	5390	4380
4.5		Height, mast raised		h ₄	mm	5875 ²	4887 ²
4.6		Initial lift		h ₅	mm	-	-
4.9		Height - tiller in drive position	min./max.	h ₁₄	mm	762/1232	762/1232
4.15		Height forks lowered		h ₁₃	mm	40	50
4.19		Overall length		l ₁	mm	1997 ³	2012 ³
4.20		Length inc. fork backs		l ₂	mm	847 ³	862 ³
4.21		Overall width, chassis		b ₁	mm	1107/1307/1507	1107/1307/1507
4.22		Fork dimensions		s/e/l	mm	35/100/1150	45/130/1150
4.24		Fork carriage width		b ₃	mm	820 ⁶	820 ⁶
4.25		Overall fork width		b ₅	mm	400/720	430/750
4.26		Width between wheel arms		b ₄	mm	853/1053/1253	853/1053/1253
4.32		Floor clearance, centre of wheel-base		m ₂	mm	30	30
4.33	Working aisle width for 1000x1200 pallet crossways		A _{st}	mm	2508 ³	2515 ³	
4.34	Working aisle width for 800x1200 pallet lengthways		A _{st}	mm	2496 ³	2508 ³	
4.35	Turning radius		W _a	mm	1588	1588	
Performance data	5.1	Travel speed	laden/unladen	km/h	5.5/6	5/6	
	5.2	Hoist speed	laden/unladen	m/s	0.12/0.24	0.10/0.17	
	5.3	Lowering speed	laden/unladen	m/s	0.40/0.32	0.40/0.36	
	5.7	Gradeability KB 5'	laden/unladen	%	1.2/6.3	0.5/6.5	
	5.8	Max. gradeability KB 30'	laden/unladen	%	4.1/9.0 ⁴	2.8/9.0 ⁴	
	5.10	Service brake				Electric	Electric
E-motor	6.1	Drive motor, rating KB 60'		kW	1	1	
	6.2	Hoist motor, rating 15% ED		kW	2,2/3 ⁵	3	
	6.3	Battery to BS/DIN 43531/35/36 A, B, C			DIN elements	DIN elements	
	6.4	Voltage, rated capacity		V/Ah	24/240-375	24/240-375	
	6.5	Battery weight ±5%		kg	260-300	260-300	
Misc	8.1	Drive control			Electronic	Electronic	
	8.4	Sound level at driver's ear		dB (A)	<70	<70	

¹ With Tele and Hilo mast +21 mm.

² With load back rest, h₄ + 543 mm for EGP 14, h₄ + 537 mm for EGP 20.

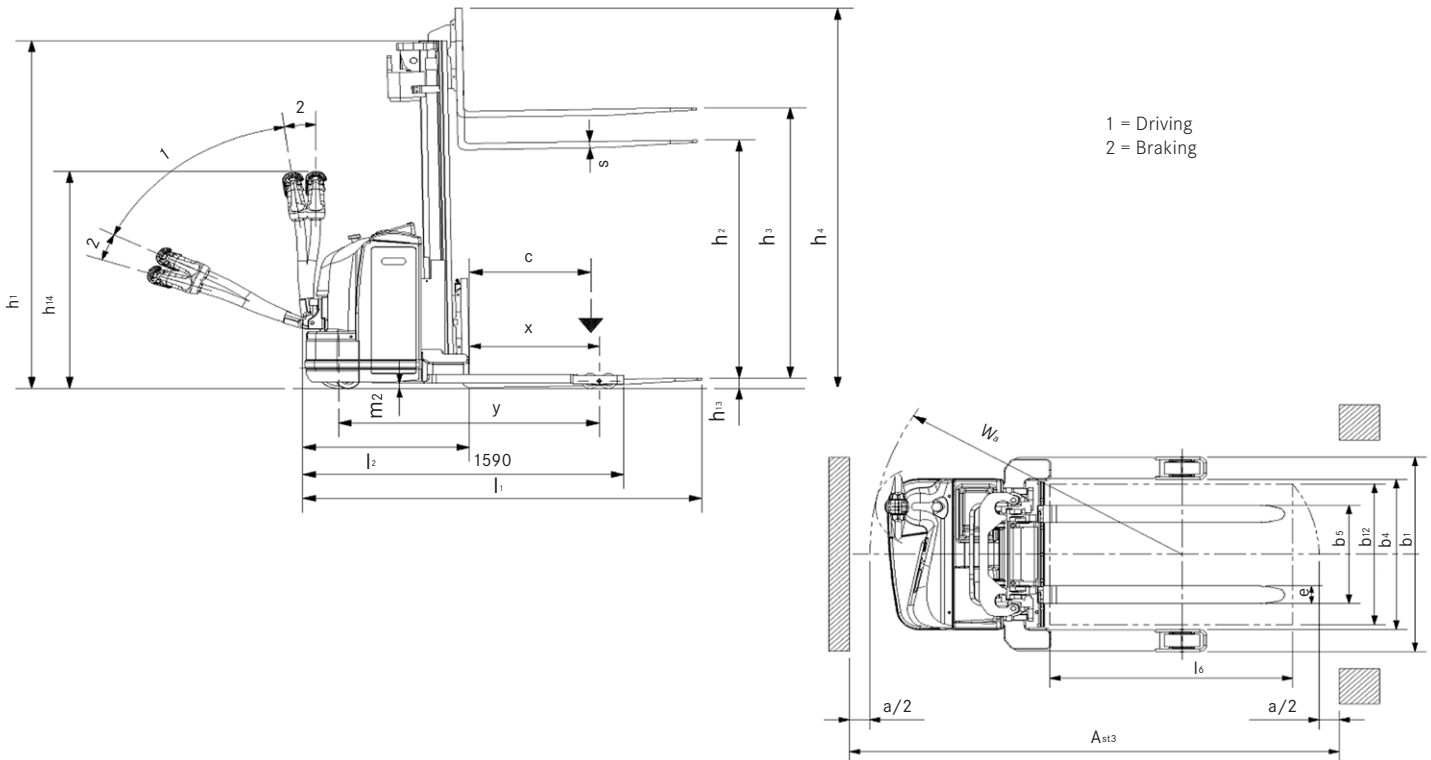
³ With Simplex and Duplex mast -21 mm.

⁴ Maximum gradeability related to truck geometry.

⁵ 2.2 kW only on EGP 14 Simplex and Tele up to h₃ = 3580 mm.

⁶ b₃ = 980 mm when width between wheel arms b₁₃ = 1380 mm.

	EGP 14										EGP 20			
	Simplex	Tele				NiHo		Triplex				Tele	Triplex	
h ₃	1510	2900	3580	3980	4480	2990	3600	4170	4470	4940	5390	2900	3580	4380
h ₁	1977	1977	2327	2527	2777	1977	2327	1877	1977	2177	2327	1977	2327	1977
h ₂	1351	140	140	140	140	1351	1701	1251	1351	1551	1701	90	90	1351
h ₄	2136	3526	4206	4606	5106	3616	4226	4796	5096	5566	6016	3526	4206	5006



Model.

The EGP is a wide-straddle design of high lift pallet truck. There are three wheel arm clear widths available (850, 1050 and 1250 mm) with which it is possible to lift virtually all load carriers. These are usually pallets, but also boxes or containers which are used in industry.

Chassis.

- The construction with four support points and the tiller fitted at the side guarantees high stability and at the same time a perfect view of the field of work when picking up and putting down a load at a height.
- The drive unit and the support wheel remain within the truck frame, so that the driver's feet are better protected.
- The battery compartment is protected all round by steel sheets and designed for DIN batteries. As standard the battery is pulled out from the side.
- The covers are made of impact-resistant heavy duty polyurethane and possess high-strength and elasticity enabling them to absorb heavy impacts without deformation.

Tiller.

- Consists of a new tiller head made of high-strength plastic material, manufactured in one piece, and a tiller arm made of profiled oval section tube, welded together using robot technology.
- The shape and fixing of the tiller are designed so that it can be operated comfortably by any size of person.
- The lightness of the tiller and its ease of operation guarantee that the pallet truck can be used over a long period without fatiguing the operator. When the tiller is released it returns to the rest position without impact or kick-back, making for a safe working environment.
- Proportional control of the hoist and lowering movement, using a control on the tiller, is provided as standard.

Drive.

- Shunt wound drive motor with a rating of 1 kW.
- The support wheel has a simple adjustment mechanism, guaranteeing optimal tyre grip and stability of the pallet truck under all conditions.

Brakes.

- The high lift pallet truck has two independent braking systems:
- Service brake: generator brake operating on the drive motor (with energy feedback) and triggered electronically by releasing the butterfly switch.
- Parking brake: electromagnetic brake disc.

Electronic system.

- 24 volt DC supply.
- Electronic MOSFET combi-controller for drive and pump motor.
- Work hour meter incorporating an error message display.
- The new electronic system guarantees low energy consumption and quiet operation of the pallet truck. The control system prevents current peaks and thus protects the motors and the battery from premature wear.
- All electrical systems and cabling are to Enclosure Class IP 54 and protected against water splashes and the ingress of dust, guaranteeing years of reliability. Components from the automotive trade with an Enclosure Class of IP 67 are used for the connecting plugs.

Options.

- Cold store version, -30°C .
- Integral 50 A charger.
- Load backrest.



Your contact

STILL GmbH
Berzeliusstraße 10
D-22113 Hamburg
Telephone: +49 (0)40/73 39-2000
Telefax: +49 (0)40/73 39-2001
info@still.de

For further information please visit:
www.still.de

STILL Materials Handling Ltd.
Aston Way, Leyland
Lancashire PR26 7UX
Telephone: +44 (0)1772 644300
Telefax: +44 (0)1772 644303
info@still.co.uk

For further information please visit:
www.still.co.uk