

# CARSILOS

HORIZONTAL CEMENT SILOS TO OPTIMIZE YOUR JOBSITE



**ELECTRONIC WEIGHING SYSTEM** with load cells complete with digital instruments and automatic measuring management.



Complete with **VIBRATORS** and discharging screw conveyor.



Main frame complete with 4 **TELESCOPIC STABILIZERS** for loading and unloading operations from the truck. No need of other lifting equipment.



**ELECTRIC CONTROL PANEL** complete with additional emergency devices.

## CARSILOS 15

(15 m<sup>3</sup>)

### CARSILOS 15

TOTAL STORAGE CAPABILITY:	15 m <sup>3</sup>
THEORYC PRODUCTION:	320 kg/l'
EMPTY PLANT WEIGHT:	2.800 kg
ABSORBED POWER:	9 kW
THREE-PHASE TENSION FEEDING:	380V , 50Hz

## CARSILOS 28

(29 m<sup>3</sup>)

### CARSILOS 28

TOTAL STORAGE CAPABILITY:	29 m <sup>3</sup>
THEORYC PRODUCTION:	320 kg/l'
EMPTY PLANT WEIGHT:	4.200 kg
ABSORBED POWER:	12 kW
THREE-PHASE TENSION FEEDING:	380V , 50Hz

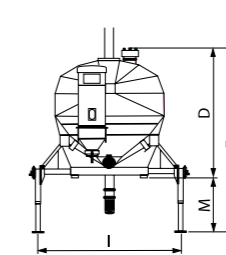
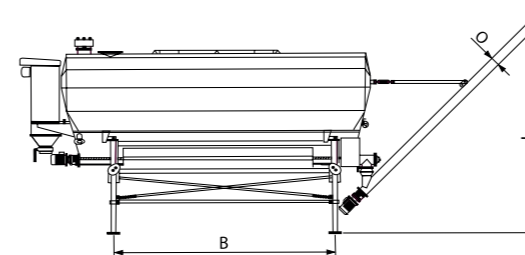
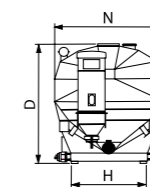
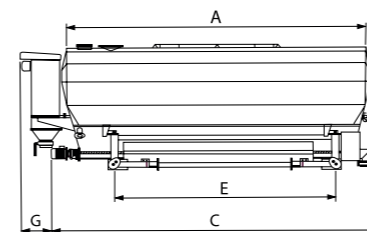
## CARSILOS 38

(38 m<sup>3</sup>)

### CARSILOS 38

TOTAL STORAGE CAPABILITY:	38 m <sup>3</sup>
THEORYC PRODUCTION:	320 kg/l'
EMPTY PLANT WEIGHT:	5.700 kg
ABSORBED POWER:	13 kW
THREE-PHASE TENSION FEEDING:	380V , 50Hz

**CARMIX**  
4x4 mixers & dumpers



	CARSILOS 15	CARSILOS 28	CARSILOS 38
A	3600	6800	9000
B	2450	4650	7100
C	4220	7418	9632
D	2717	2717	2717
E	2450	4650	7100
F	3957	3957	3957
G		650	
H		1720	
I		3250	
L	min 3850 max 4200 (5550)		
M		1240	
N		2440	
O		Ø194	

**METALGALANTE** s.p.a.

follow us on:



#BeACarmixMan

[carmix.com](http://carmix.com)