

Recycler, Stabilizer, Stabilizer Deep Mix MPH362/364-R/S/SDM-2

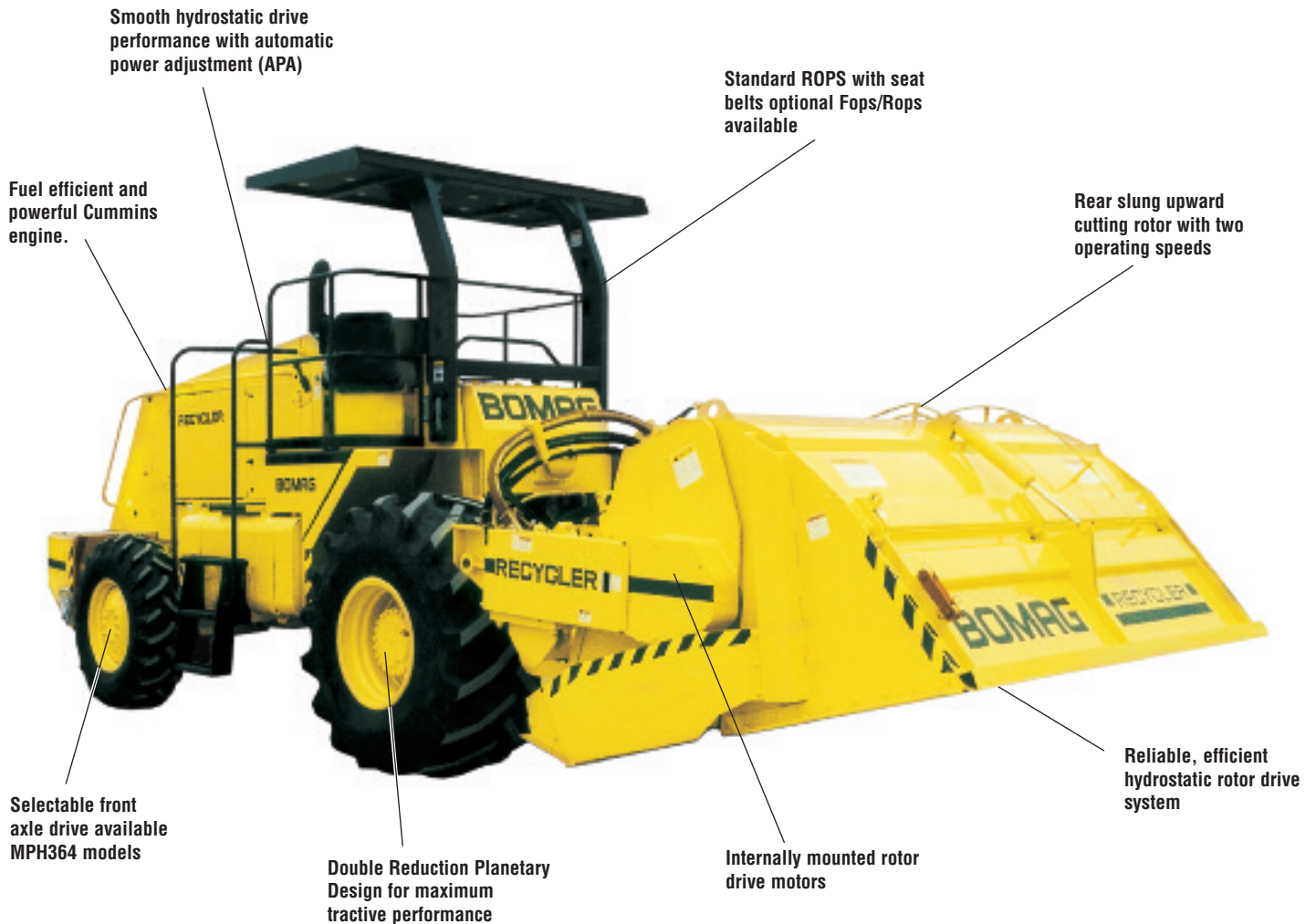


KEY FEATURES

- All hydrostatic travel system
- Planetary Gearbox Drive Design
- Travel speeds to 10 mph; working speeds to 187 fpm
- Optional environmental cabin
- Rear positioned rotor
- 79" rotor cutting width
- Hydrostatic rotor drive with Automatic Power Adjustment (APA)
- Two (2) rotor cutting speeds
- Selectable hydrostatic front drive axle - MPH364-2 Model



MPH362/364-R/S/SDM-2



■ *Designed and built for the most demanding applications...*

Increased traffic volume, greater traffic axle loads and shortage of funds for roadway maintenance are some of the primary causes for premature failure of roadway surfaces in many areas of the country. As a result, road repair requirements stretch financial resources to, or beyond, their budgetary limits.

With the BOMAG MPH 362 & 364-2 Recycler, old and deteriorated asphalt pavements can be cut, pulverized and mixed with new binding agents. This RAP (Recycled Asphalt Product) material is reused to provide a new road base material. This ecological and economical alternative of recycling pre-existing surfaces offers a cost effective solution to road maintenance.



MPH362R-2 hard at work on a secondary road.

Featuring...

Handling is Easier and Safer:

- The comfortable operator's seat is positioned at a 45 degree angle to provide optimum viewing for safer operation, fatigue-free comfort and increased productivity.
- All controls are conveniently positioned to provide easier operation and improved results.
- Rear mounted rotor design allows precise positioning for initial cuts and placement closer to obstructions in confined areas.
- Automatic Proportioning Adjustment (APA) maintains maximum performance based on rotor system load.
- High travel and work speeds provide maximum productivity for increased profits.

Productivity and Profit:

- Selectable 2-speed rotor design ensures high levels of application flexibility.
- All-wheel drive for optimum traction means trouble-free operation even under difficult jobsite conditions. MPH 364-2 model
- Excellent maneuverability thanks to the compact design. Independent rear wheel braking enhances maneuverability.
- Increased availability through the quick-change cutting tooth replacement system.

High Reliability:

- High capacity hydraulic pumps and motors ensure efficient operation even under the most demanding conditions.
- A rigid frame and robust travel and rotor system ensure greater machine reliability, long service life and low cost of ownership.

*Bomag Reliability and Quality is
Your Investment Security*

Easy Maintenance:

- Easy access to the maintenance points, which have been reduced to a minimum.
- Major components are strategically positioned for easy access and servicing.
- Hydraulic test points are strategically located for quick and easy troubleshooting.
- Hydraulic components, batteries, filters and controls and indicators are readily accessible and are protected from vandalism by special guards and lockable compartments.
- Replacement of cutting teeth is quick and easy.
- The rotor end segments are bolted on and in case of excess wear, can be easily and quickly replaced without removal of the rotor.



Wide opening hoods and access doors provide easy access to maintenance items and for cleaning purposes.



Convenient positioning of operational controls and indicators for increased comfort and productivity.



Easy and convenient replacement of cutting teeth without special tools.

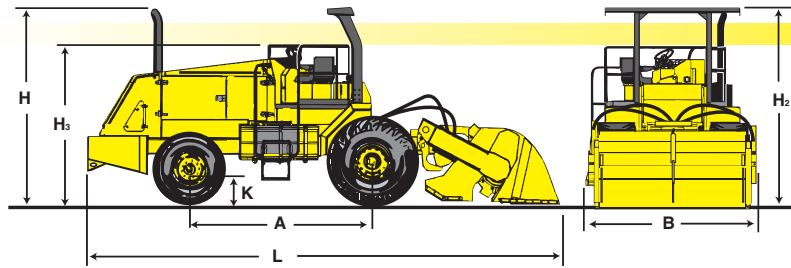


MPH362-2 shown with optional all-weather cab and air conditioning.

With these features and many more, it's easy to see why these models maintain a high residual value while delivering lower lifetime operating costs.

Technical Specifications

MPH362/364-2



Dimensions in inches (mm)

	A	B	H	H ₂	H ₃	K	L
MPH 362/364-R/S/SDM-2	129 (3277)	115 (2921)	136 (3454)	138 (3505)	111 (2819)	19 (483)	331 (8407)

Technical data

Weights

Operating Weight CECE.....	lbs (kg)	39,000 (17690)
Axle load rear.....	lbs (kg)	28,080 (12737)
Axle load front.....	lbs (kg)	10,920 (4953)

Dimensions

Height with cab.....	in (mm)	138 (3505)
Track Radius, inner.....	in (mm)	252 (6401)
Dimensions.....		see sketch

Driving Characteristics (depending on site conditions)

Speed (working).....	fpm (m/min)	187 (57.0)
Speed (travel).....	mph (kmph)	10 (16.1)

Drive

Engine manufacturer.....	Cummins
Type.....	QSM11
Cooling.....	Water/charge air cooled
Number of cylinders.....	6
Performance SAE J1349.....	360 (268.3) hp (kW)
Speed.....	2100 rpm
Electric Equipment.....	24 V
Drive System.....	hydrostatic
Driven wheels.....	rear*

*All wheel drive standard model MPH364 R/S/SDM-2

Tires

Tire size, front.....	14.9 x 24 8PR
Tire size, rear.....	28LR x 26-165LI

Brakes

Service brake.....	hydrostatic
Parking brake.....	SAHR
Emergency brake.....	SAHR

Steering

Steering system.....	automotive
Steering method.....	hydraulic

Rotor

	R	S	SDM
Rotor width.....	79 (2005) in (mm)	79 (2005)	79 (2005)
Rotor diameter, outer.....	44 (1118) in (mm)	48 (1218)	59.5 (1511)
Max cutting depth.....	12 (305) in (mm)	14 (356)	21 (533)
Rotor speed.....	135, 150 rpm	135, 150	135, 150
Type of cutting teeth.....	bullet	paddle	paddle
Number of cutting teeth.....	168	70	70
Direction of cutting.....	upward	upward	upward

Capacities

Fuel.....	gal (l)	240 (908)
Hydraulic.....	gal (l)	90 (341)
Engine oil.....	gal (l)	9 (34)

Technical modifications reserved. Machines may be shown with options.

Standard Equipment

- Tier 3/Stage III Electronic controlled engine
- Hydrostatic rotor drive with Automatic Power Adjustment (APA)
- Hydrostatic travel system with ASC traction control system.
- Rear drive system with Double Reduction Planetary Gearbox Drive and SAHR brakes
- Selectable hydrostatic front drive axle (MPH364-2 models only)
- Hydraulic power steering
- Single lever control for travel and steer assist braking
- 24V electrical system with manual battery disconnect
- Dual element engine air filter
- Engine warning and shut down system
- Vehicle hydraulic system monitoring and warning system
- Warning horn, Emergency stop and Back-up alarm
- Visual Display(s): Fuel level, Hour meter, Voltmeter, Engine coolant temperature, Engine oil pressure, Hydraulic oil temperature, Rotor drive pressure, Forward travel pressure, Speedometer, Engine tachometer
- Visual warning indicators: Low rotor charge pressure, Engine air filter service, Hydraulic filter service, Brakes applied, Speed range, High engine coolant temperature, High hydraulic oil temperature, Low engine oil pressure
- ROPS with seat belt
- Adjustable operator's seat
- Tilttable steering wheel

Optional Equipment

- FOPS/ROPS (Replaces ROPS)
- Cabin With FOPS/ROPS and heater
- Air Conditioner
- Working Lights
- Turn Signals, 4-way flashers and Stop light
- Tool Kits for MPH362SDM & 364SDM-2, MPH362R & 364R-2, and MPH362S & 364S-2
- Recycler Rotor Kit for MPH362S & 364S-2
- Stabilizer Kit for MPH362R & 364R-2
- Water system (0-350 gpm / 1325 lpm)
- ALPS System (0-130 gpm / 492 lpm)
- Paint (Other than BOMAG Yellow)

BOMAG
FAYAT GROUP

BOMAG Americas, Inc.
2000 Kentville Rd. • Kewanee, IL 61443
Tel: 309 853-3571 • Fax: 309 852-0350